

Tracking Molokai's Population

Information Gathered by Catherine Cluett | Infographic by Leslie Hibner

Data on race and ethnicity in Hawaii was just released from information obtained during the 2010 Census. Here, we've collected data pertinent to Molokai from both the Census Bureau and the American Community Survey. It's interesting to note that Molokai's percentage of residents of Native Hawaiian decent remains over twice as high as any other main Hawaiian island (except Niihau) at 61.1 percent. In second place is Hawaii Island, with 29 percent. Molokai's 2010 total population of 7,345 is a slight decrease from 2000's population of 7,404.

Molokai population changes

1960: 5,023

1970: 5,261

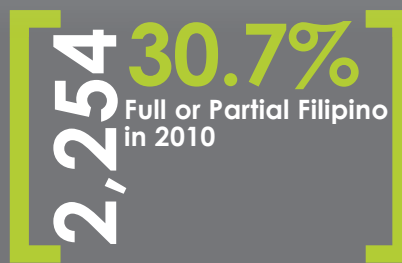
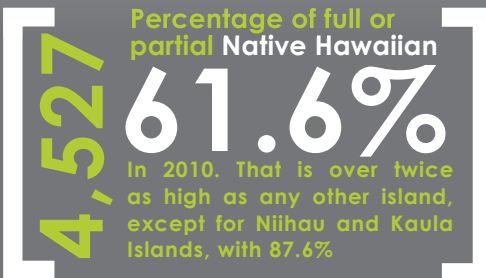
1980: 6,049

1990: 6,717

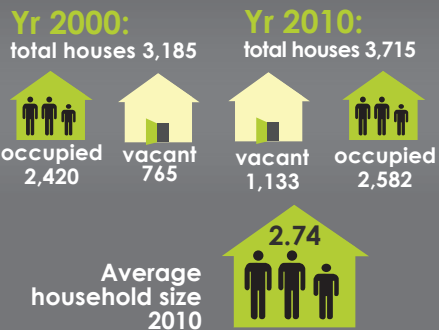
2000: 7,404

2010: 7,345

-0.8% Percent drop from 2000-2010

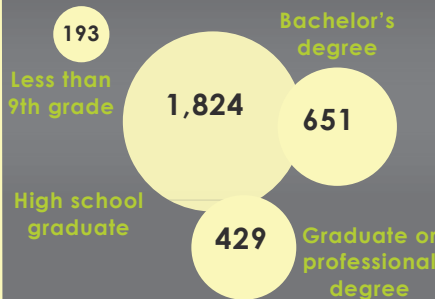


Molokai Housing



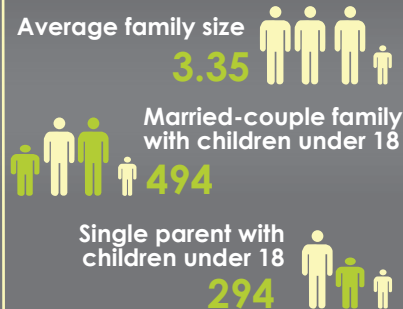
Level of Education

Info from 2010



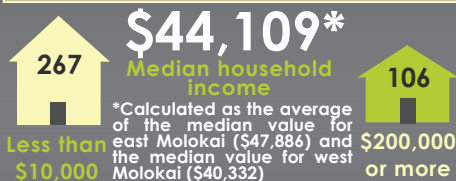
Molokai Families

Info from 2010



Income per Household

Info from 2010. Total households: 2,770



Employment Status

Info from 2010



Molokai race changes

